

TIPO TORNILLO MONTAJE EN PANEL

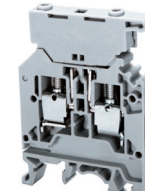
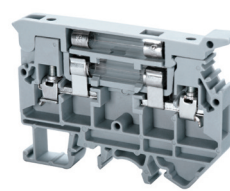
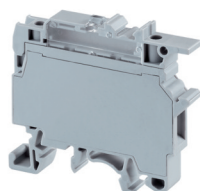
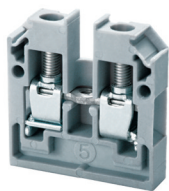
CLEMAS PORTAFUSIBLES

CMB4

CF4U

CAFL4U

CSFL6U



AEx eII EEx eII

Certificaciones

Calibre del Conductor	22-8 AWG	0.25-6mm ²	22-8 AWG	22-8 AWG	0.25-6mm ²	22-8 AWG	22-10 AWG	0.5-4mm ²	22-10 AWG	22-8 AWG	15-6mm ²	22-8 AWG
Clasificación de Voltaje	300V	500V	300V	600V	1000V	600V	600V	1000V	600V	300V	500V	300V
Clasificación de Corriente	35A	32A	35A	10A	6.3A	10A	16A	63A	16A	10A	10A	10A
Tamaño de Terminal	6x28x27 mm			8x50.3x57mm			9x50x72 mm			8x60x43 mm		
Placa Final	EPCMB4			-			EPCAFL4U			EPCSFL6U		
Etiquetas	MT2			MT8			MT9			MT8		
Puentes de 10 Polos	CA727/10			CA711/10			CA716/10			CA710/10		
Tipo de conexión	1 & 1			Ø5x20, Ø5x25 mm			Ø1/4x1 in., Ø1/4x1 1/4 in.			Ø5x20, Ø5x25 mm		

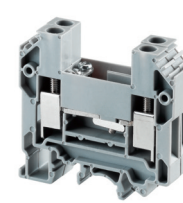
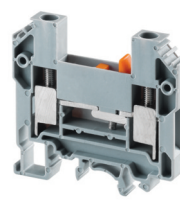
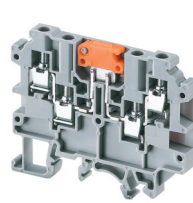
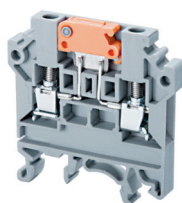
DESCONECTADORES

CKT4U

CKT4U/4

CDTTU

CDTTUSH



Certificaciones

Calibre del Conductor	22-10 AWG	0.5-1.5mm ²	22-10 AWG	22-8 AWG	0.25-6mm ²	22-8 AWG	16-6 AWG	1.5-10mm ²	16-6 AWG	16-6 AWG	15-10mm ²	16-6 AWG
Clasificación de Voltaje	600V	800V	600V	-	800V	-	600V	800V	600V	-	300V	160V
Clasificación de Corriente	16A	17.5A	16A	-	17.5A	-	41A	41A	41A	-	10A	10A
Tamaño de Terminal	6x46x46.3 mm			6x54.3x65 mm			8x58.7x63mm			16x58.7x63mm		
Placa Final	EPCKT4U			EPCKT4U/4			EPCDTTU			EPCDTTU		
Etiquetas	MT6			MT6			MT8			MT8		
Puentes de 10 Polos	CA714/10			CA714/10			CA710/10			CA710/10		
Tipo de conexión	1 & 1			2 & 2			1 & 1			2 & 2		

MINI BLOQUES

CLEMAS PARA TIERRA

CGMT4

CGT4N

CGT6N

CGT10U



AEx eII EEx eII

AEx eII EEx eII

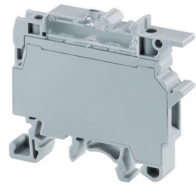
AEx eII EEx eII

Certificaciones

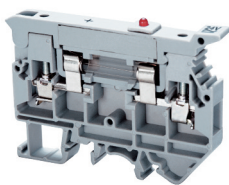
Calibre del Conductor	22-10 AWG	0.5-4mm ²	22-10 AWG	22-10 AWG	0.5-4mm ²	22-10 AWG	22-8 AWG	1.5-6mm ²	22-10 AWG	16-8 AWG	1.5-10mm ²	16-8 AWG
Clasificación de Voltaje	-	400V	-	-	800V	-	-	800V	-	-	800V	-
Clasificación de Corriente	-	32A	-	-	32A	-	-	41A	-	-	57A	-
Tamaño de Terminal	6x29x27 mm			6x45.4x54.2 mm			8x47x54.5 mm			10x50x45 mm		
Placa Final	-			-			-			-		
Etiquetas	MT2			MT6			MT8			MT10		

CLEMAS PORTAFUSIBLES CON LED **CLEMAS PORTAFUSIBLES DOBLE NIVEL**

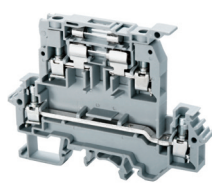
CF4UL* **CAFL4UL*** **DDFL4U** **DDFL4UE***



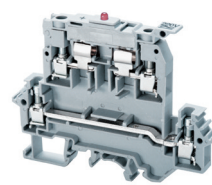
CE



CE



CE



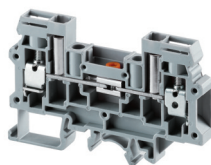
CE

CF4UL*			CAFL4UL*			DDFL4U			DDFL4UE*		
22-8AWG	0.25-6mm ²	22-8AWG	22-10AWG	0.5-4mm ²	22-10AWG	22-8 AWG	0.25-6mm ²	22-8 AWG	22-8 AWG	0.25-6mm ²	22-8 AWG
600V	1000V	600V	600V	1000V	600V	600V	800V	600V	600V	800V	600V
6.3A	6.3A	10A	16A	6.3A	16A	6.3A/35A	6.3A/32A	6.3A/35A	6.3A/35A	6.3A/32A	6.3A/35A
8x50.3x57mm			9x50x72 mm			8x67.4x88mm			8x67.4x88mm		
MT8			EPCAF4U			EPDDL4U			EPDDL4U		
CA711/10			CA716/10			CA729/10			CA729/10		
Ø5x20, Ø5x25 mm			Ø1/4x1 in., Ø1/4x1 1/4 in.			Ø5x20, Ø5x25 mm			Ø5x20, Ø5x25 mm		

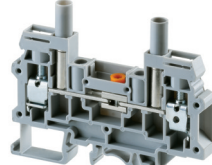
*Favor de adicionar el voltaje requerido con sufijos como en el ejemplo. CSFL4U(L)/24 para 24V CA/CC.

DESCONECTADORES Y CLEMAS PRUEBAS

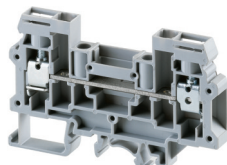
CDS6U **CDS6U/TS** **CDS6U/FT** **CDS6U/SC**



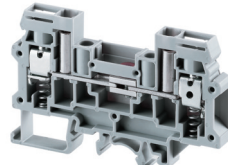
CE



CE



CE



CE

CDS6U			CDS6U/TS			CDS6U/FT			CDS6U/SC		
22-6 AWG	0.25-10mm ²	22-6 AWG	22-6 AWG	0.25-10mm ²	22-6 AWG	22-6 AWG	0.25-10mm ²	22-6 AWG	22-6 AWG	0.25-10mm ²	22-6 AWG
-	800V	600V	-	630V	600V	-	1000V	600V	-	800V	600V
-	41A	45A	-	41A	45A	-	41A	45A	-	41A	45A
8x51x82mm			8x51x82mm			8x51x82mm			8x51x82mm		
EPCDS6U			EPCDS6U			EPCDS6U			EPCDS6U		
MT8			MT8			MT8			MT8		
CA723/10			CA723/10			CA723/10			CA723/10		
1 & 1			Con terminales de prueba			1 & 1			Muelle de seguridad		

CLEMAS PARA TIERRA

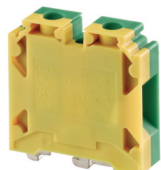
CGT10N **CGT16N** **CGT35U**



CE

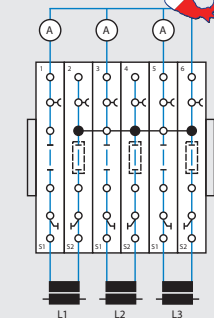


CE

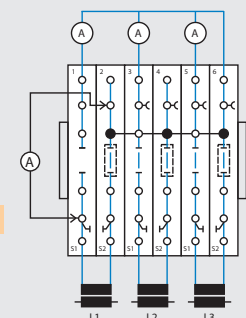


EX AEx eII EEx eII CE

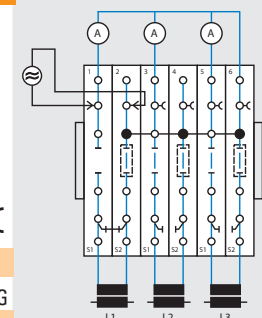
CGT10N			CGT16N			CGT35U		
16-6 AWG	0.25-16mm ²	16-6 AWG	20-4 AWG	0.25-16mm ²	20-4 AWG	8-2 AWG	10-35mm ²	8-2 AWG
-	800V	-	-	800V	-	-	800V	-
-	57A	-	-	76A	-	-	125A	-
10x48.5x55mm			12x48.5x55mm			16x61.5x58 mm		
MT10			MT12			MT16		



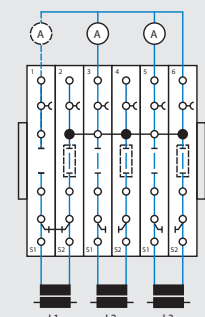
Estatus de Operación



Comparación de Medida L1



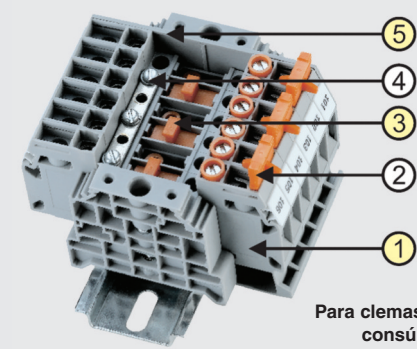
Multímetro para L1 vía fuente de Alimentación externa



Cambio de medición para L1

Ejemplo para un set de prueba para un Transformador de corriente de 3 Ø

No.	Cat. No.	Qty.
1	CDS6U	6
2	SLS2	3
3	LCCDS	3
4	CA723/5	1
5	EPCDS6U	1



Para clemas especiales consúltenos.