

Control Disconnect Enclosures C

Stahlin's Control Disconnect Enclosures offer a unique range of product designed around a Type 4X watertight, corrosion resistant vertical disconnect handle. The versatile mechanism functions as a universal linkage compatible with name brand disconnects, circuit breakers and combination starters.

An environmentally sealed vertical disconnect mechanism differs significantly from a rotary through-the-door mechanism. The assembly maintains the complete environmental integrity of the enclosure while it minimizes panel obstruction. The mechanism mounts to the far right side of the enclosure and minimizes the linkage interference with panel mounted components. As a result, competitively priced, commercially available control can be used. Stahlin's unique handle mechanism uses internal cabinet space in the most efficient way possible. The handle mechanism is unchanged, regardless of the capacity of the control. However, five different enclosure sizes are offered to accommodate both small and large control assemblies.

Control Disconnect Enclosure Attributes

- Environmentally sealed Type 4X disconnect handle
- Safety lock in off position
- Memory retaining polyurethane gasket
- High impact resistance
- 300 series stainless steel
- Stands up to an exceptionally broad range of chemical exposures
- Integral mounting feet
- Molded in panel mounting inserts

Control Disconnect Industry Standards

UL/cUL 50	File E64358SP Type 1, 3, 3R, 4X, 12 as designated
NEMA 250	Type 1, 3, 3R, 4X, 12 as designated
CSA Std C22.2	File LR069014 Type 1, 3, 3R, 4X, 12 as designated
Temperature Range	(-76°F to +274°F) (-60°C to +134°C)
Flammability Rating	UL94-5V
Self extinguishing	Non-halogenated, non-flame propagating
Chemical Resistance	Full chemical resistance charts listed in appendix
NFPA No. 101 Flame Spread	Class A (1)



Disconnects

Control Disconnect

C

Technical Specifications - Control Disconnect Enclosures

C

*Base configuration (no suffix) - Vertical disconnect handle,
without pre-mounted control*



NOTES:

C Construction

Material	Hot compression molded fiberglass reinforced polyester
Gasket	Poured polyurethane seamless gasket provides watertight, dust-tight environmental seal
Stainless Steel Hardware	300 Series stainless used on all hardware
Molded in Mounting Bosses	Panel mounting capability for fixed rear panel
Metal inserts	All bosses utilize threaded brass inserts
Soft Edge Design	Rounded edges, minimal protrusions or exposed pocket areas for assembly of dust and debris
Latch Material	Glass Filled Polyamide with foam in place gasket

C Industry Standards

UL/cUL 50	File E64358SP Type 1, 3, 3R, 4X, 12
NEMA 250	Type 1, 3, 3R, 4X, 12
CSA Std C22.2	File LR069014 Type 1, 3, 3R, 4X, 12
Temperature Range	(-76°F to +274°F) (-60°C to +134°C)
Flammability Rating	UL94-5V
Self Extinguishing	Non-halogenated, non-flame propagating
Chemical Resistance	Full chemical resistance charts listed in appendix
NFPA No. 101 Flame Spread	Class A (1)

C Accessories

Back Panels

Carbon Steel	BP_CS	pg. 149 - 150
---------------------	-------	---------------

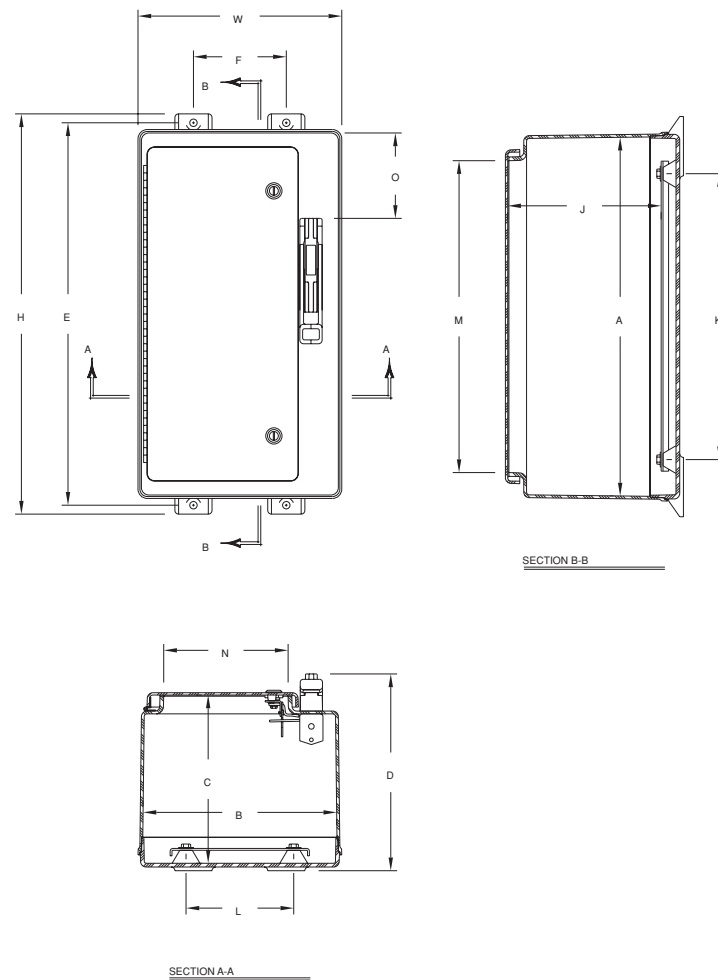
Accessories

Drain & Breather Vents	pg. 144, 146
Hole Plugs	pg. 145
Assorted Hubs and Cord Grips	pg. 145, 148
All Other Accessories	pg. 144 - 159

C Modifications

Custom Colors	pg. 12 - 13
Silk Screening	pg. 12 - 13
EMI/RFI Shielding	pg. 12 - 13
Custom Window	pg. 12 - 13
Custom Cutouts/Holes	pg. 12 - 13

Control Disconnect Enclosures Technical Drawings



Control Disconnect Enclosures

SIZE ID NUMBER	OVERALL H X W X D	INSIDE A X B X C	MOUNTING E X F	J	K	L	OPENING ENCLOSURE M X N	O	SHIPPING WEIGHT	PANEL NUMBER
C2016*	22.75 x 16.87 x 11.00 (578 x 429 x 279)	19.70 x 16.04 x 9.24 (500 x 407 x 235)	21.50 x 10.12 (546 x 257)	8.26 (210)	15.25 (387)	11.25 (286)	16.75 x 12.19 (425 x 310)	3.50 (89)	23.5	BP2016CD**
C2412*	26.95 x 13.72 x 13.25 (685 x 348 x 337)	24.00 x 12.87 x 11.33 (610 x 327 x 288)	25.75 x 6.25 (654 x 159)	10.33 (262)	19.25 (489)	7.25 (184)	21.00 x 8.37 (533 x 213)	5.75 (146)	28.6	BP2412CD**
C2424*	27.00 x 25.24 x 13.19 (686 x 641 x 335)	24.05 x 24.39 x 11.25 (611 x 619 x 286)	25.75 x 17.87 (654 x 454)	10.25 (260)	19.25 (489)	19.25 (489)	21.25 x 20.00 (540 x 508)	5.75 (146)	42.7	BP2424CD**
C3024*	33.41 x 26.32 x 13.19 (849 x 668 x 335)	30.46 x 25.47 x 11.27 (774 x 647 x 286)	32.25 x 18.50 (819 x 470)	10.27 (261)	25.25 (641)	19.25 (489)	27.38 x 21.25 (695 x 540)	12.25 (311)	53.6	BP3024CD**
C3630*	39.31 x 32.50 x 13.31 (999 x 826 x 338)	36.31 x 31.69 x 11.36 (922 x 805 x 289)	38.13 x 23.88 (968 x 606)	10.36 (263)	31.25 (794)	25.25 (641)	33.25 x 27.5 (845 x 692)	12.25 (311)	71.5	BP3630CD**

All measures are in inches, items in parentheses are in millimeters.

*Disconnect, fuse block, breaker, yoke, switches, or other internal components are not furnished with enclosure.

**Panel ordered separately.