

The DuraBoxx® Series

D

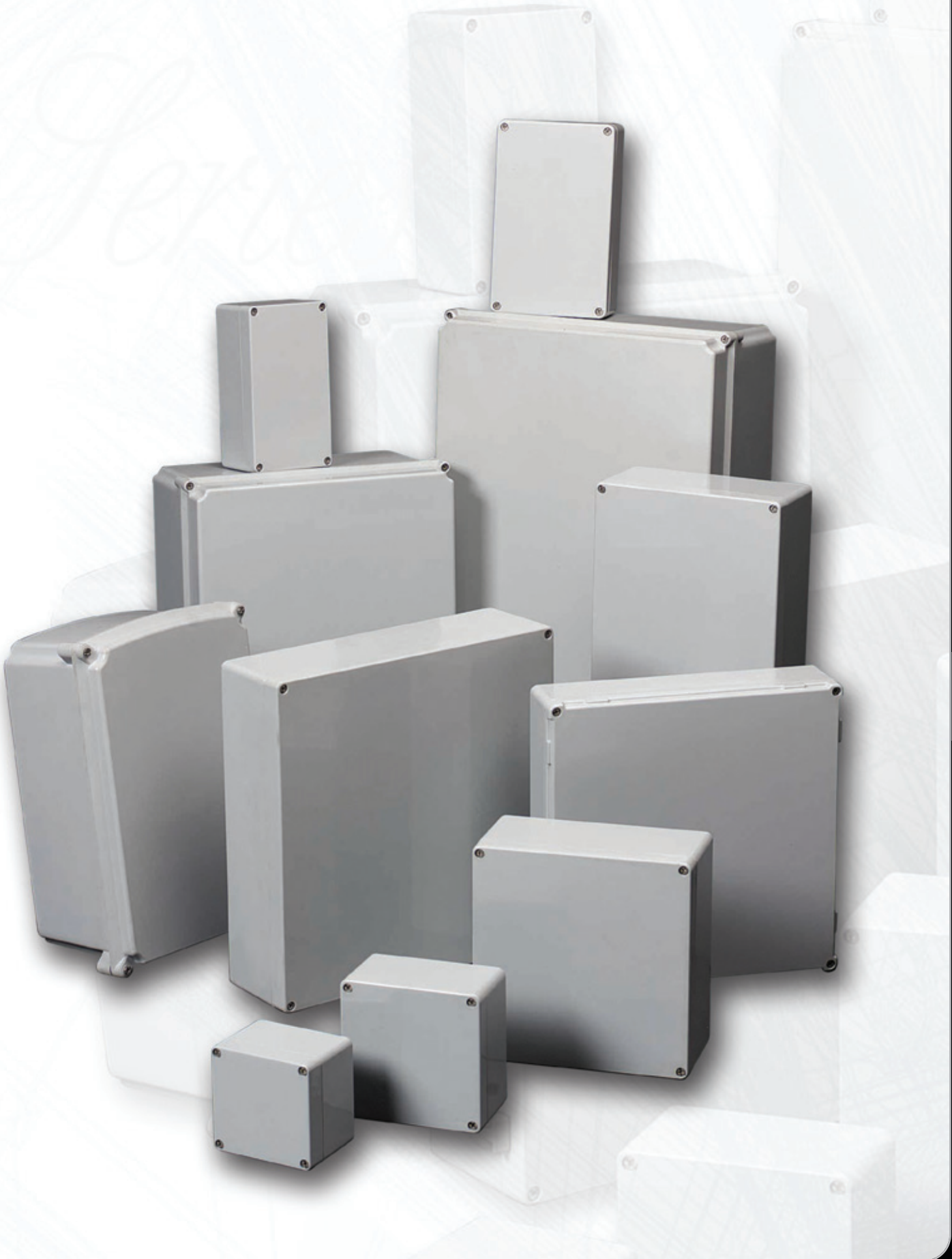
The Stahlin DuraBoxx® Series was developed with a sleek design and shallow depths. These enclosures are suited for rugged, durable performance in both commercial and industrial indoor and outdoor environments such as mining, oil, gas, wastewater treatment, and petro-chem. Also, because of their pleasing aesthetics and flush cover design, they are well suited for high-end electronic applications such as wireless communications and operator interfaces.

DuraBoxx® Series Attributes

- 14 sizes available
- Size range from 3" x 3" to 24" x 16"
- Flat cover with captive cover screws
- DIN rail mounting capabilities
- No sidewall obstructions, flush cover
- Clear cover options available on select sizes
- Back panels available for all sizes

DuraBoxx® Industry Standards

UL/cUL 50/508	File E64358 Type 1, 3, 3S, 4X, 6, 6P, 12
NEMA 250	Type 1, 3, 3S, 4X, 6, 6P, 12
CSA Std C22.2	File LR069014 Type 1, 3, 3S, 4X, 6, 6P, 12
IEC 529	IP66, IP67, IP68
Temperature Range	(-26°F to +257°F) (-32°C to +125°C)
Flammability Rating	UL94-V0
Self Extinguishing	Non-halogenated, Non-flame propagating

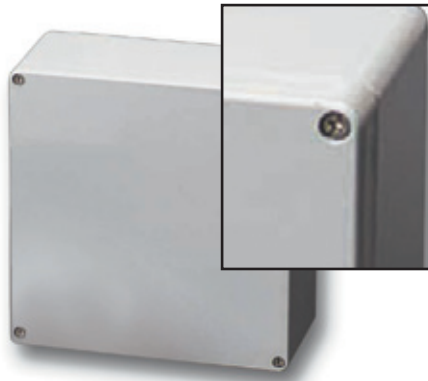


DuraBoxx®

W

Technical Specifications - D Series

"W" configuration - Flush fitting cover fastened by captive lid screws.



W Construction

Material	Hot compression molded fiberglass reinforced polyester (thermoset)
Gasket	Poured polyurethane seamless gasket provides watertight, dust-tight environmental seal
Recessed Screws	No protruding surfaces
Stainless Steel Hardware	300 Series stainless used on all hardware
Mounting Bosses	Panel mounting capability for fixed rear panel
Metal inserts	All bosses utilize threaded brass inserts accepting 10-32 screws
Soft Edge Design	Rounded edges, minimal protrusions or exposed pocket areas for assembly of dust and debris

W Industry Standards

UL/cUL 50/508	File E64358 Type 1, 3, 3S, 4X, 6, 6P, 12
NEMA 250	Type 1, 3, 3S, 4X, 6, 6P, 12
CSA Std C22.2	File LR069014 Type 1, 3, 3S, 4X, 6, 6P, 12
IEC 529	IP66, IP67, IP68
Temperature Range	(-26°F to +257°F) (-32°C to +125°C)
Flammability Rating	UL94-V0
Self Extinguishing	Non-halogenated, Non-flame propagating

NOTES:

W Accessories

Back Panels

Carbon Steel	BP_CS	pg. 153
---------------------	-------	---------

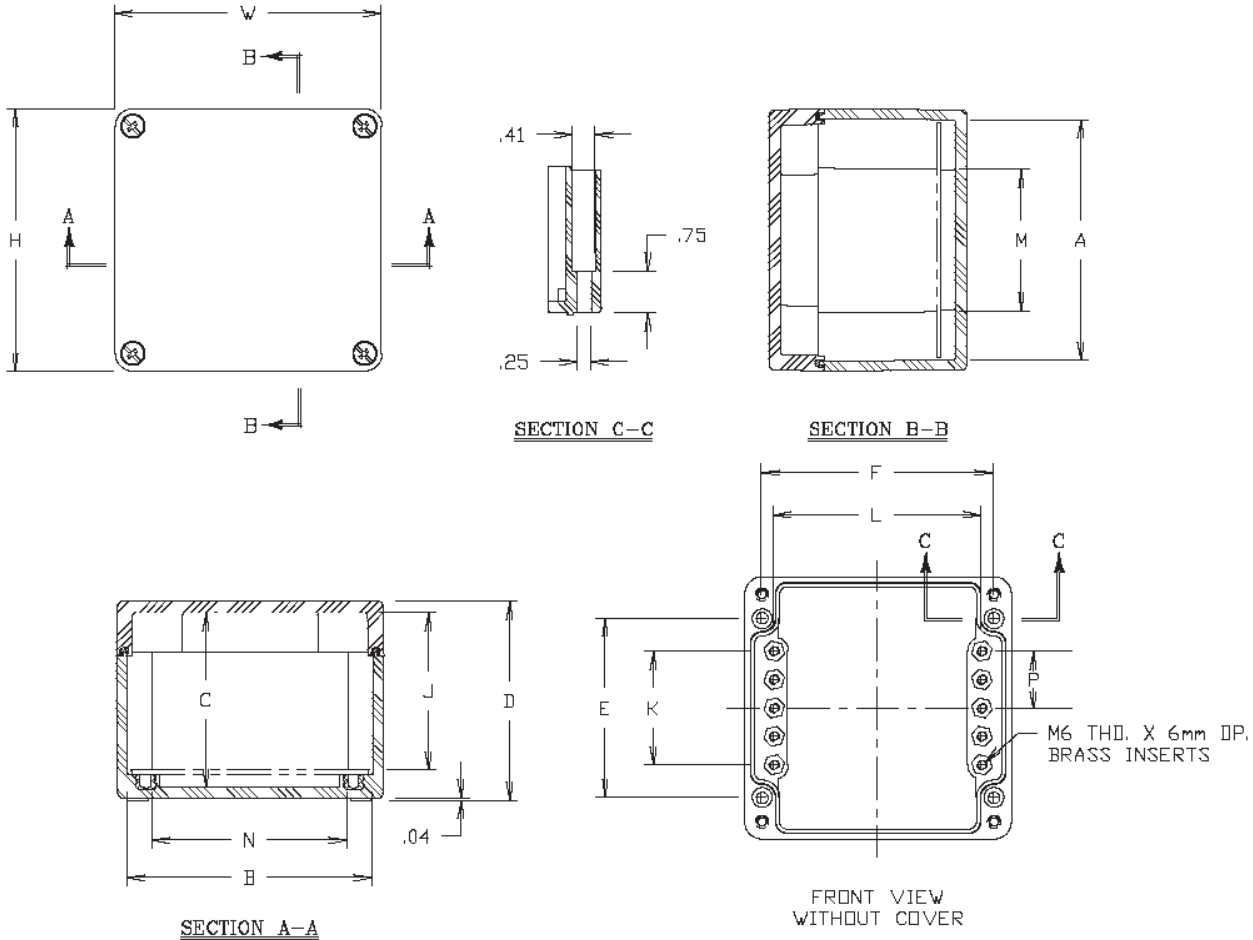
Accessories

Drain & Breather Vents	pg. 144, 146
Hole Plugs	pg. 145
Assorted Hubs and Cord Grips	pg. 145, 148
All Other Accessories	pg. 144 - 159

W Modifications

Custom Colors	pg. 12 - 13
Silk Screening	pg. 12 - 13
EMI/RFI Shielding	pg. 12 - 13
Custom Window	pg. 12 - 13
Custom Cutouts/Holes	pg. 12 - 13

D Series "W" Configuration Technical Drawings



DuraBoxx® D Series Enclosures											
SIZE ID NUMBER	OVERALL H X W X D	INSIDE A X B X C	MOUNTING E X F	J	K	L	M	N	P	SHIPPING WEIGHT	PANEL NO.
D333W	2.95 x 3.15 x 2.78 (75 x 80 x 76)	2.56 x 2.76 x 2.56 (65 x 70 x 65)	1.57 x 2.48 (40 x 63)	2.26 (57)	N/A	2.28 (58)	1.06 (27)	1.93 (49)	N/A	0.81 LB	D333BP*
D342W	2.95 x 4.33 x 2.22 (75 x 110 x 56)	2.56 x 3.93 x 1.81 (65 x 100 x 46)	1.77 x 3.86 (45 x 98)	1.53 (39)	N/A	3.50 (89)	1.29 (33)	3.37 (86)	N/A	.88 LB	D342BP*
D554W DCC554W	4.72 x 4.80 x 3.58 (120 x 122 x 91)	4.33 x 4.41 x 3.15 (110 x 112 x 80)	3.23 x 4.17 (82 x 106)	2.93 (74)	2.05 (52)	3.74 (95)	2.56 (65)	3.50 (89)	1.02 (26)	1.7 LB	D554BP*
D593W DCC593W	4.72 x 8.66 x 3.19 (120 x 220 x 81)	4.34 x 8.28 x 2.83 (110 x 210 x 72)	3.23 x 8.03 (82 x 204)	2.62 (67)	2.05 (52)	7.60 (193)	2.57 (65)	7.37 (187)	1.02 (26)	2.4 LB	D000BP*
D594W DCC594W	4.72 x 8.66 x 3.58 (120 x 220 x 91)	4.33 x 8.27 x 3.15 (110 x 210 x 80)	3.23 x 8.03 (82 x 204)	2.93 (74)	2.05 (52)	7.60 (193)	2.57 (65)	7.37 (187)	1.02 (26)	2.5 LB	D594BP*
D774W	6.30 x 6.30 x 3.58 (160 x 160 x 91)	5.79 x 5.79 x 3.11 (147 x 147 x 79)	4.33 x 5.51 (110 x 140)	2.93 (74)	2.99 (76)	5.20 (132)	3.50 (89)	4.68 (119)	1.50 (38)	2.8 LB	D774BP*
D7114W	6.30 x 10.24 x 3.58 (160 x 260 x 91)	5.79 x 9.72 x 3.11 (147 x 247 x 79)	4.33 x 9.45 (110 x 240)	2.93 (74)	2.99 (76)	9.13 (232)	3.50 (89)	8.62 (219)	1.50 (38)	3.8 LB	D7114BP*
D10105W	9.84 x 10.04 x 4.76 (250 x 255 x 121)	9.31 x 9.51 x 4.29 (236 x 242 x 109)	7.87 x 9.25 (200 x 235)	4.11 (104)	3.94 (100)	8.94 (227)	7.03 (179)	8.41 (214)	1.97 (50)	6.4 LB	D10105BP*
D10165W	9.84 x 15.75 x 4.76 (250 x 400 x 121)	9.31 x 15.22 x 4.29 (236 x 387 x 109)	7.87 x 14.96 (200 x 380)	4.09 (104)	3.94 (100)	14.65 (327)	7.03 (179)	14.12 (359)	1.97 (50)	8.8 LB	D10165BP*
D14144W	14.17 x 14.17 x 3.58 (360 x 360 x 91)	13.66 x 13.66 x 3.11 (347 x 347 x 79)	12.20 x 13.39 (310 x 340)	2.91 (74)	5.35 (136)	13.07 (332)	11.38 (289)	12.56 (319)	2.68 (68)	8.0 LB	D14144BP*
D16165W	15.94 x 15.75 x 4.76 (405 x 400 x 121)	15.42 x 15.22 x 4.29 (392 x 387 x 109)	13.98 x 14.96 (355 x 380)	4.09 (104)	9.84 (250)	14.65 (372)	13.14 (334)	14.12 (359)	4.92 (125)	11.0 LB	D16165BP*

Duraboxx® Clear Cover Sizes: DCC Part Number

* Panel ordered separately

Technical Specifications - DL Series

"W" configuration - Flush fitting cover fastened by captive lid screws.

W



W Construction

Material	Hot compression molded fiberglass reinforced polyester (thermoset)
Gasket	Poured polyurethane seamless gasket provides watertight, dust-tight environmental seal
Recessed Screws	No protruding surfaces
Stainless Steel Hardware	300 Series stainless used on all hardware
Mounting Bosses	Panel mounting capability for fixed rear panel
Metal inserts	All bosses utilize threaded brass inserts accepting 10-32 screws
Soft Edge Design	Rounded edges, minimal protrusions or exposed pocket areas for assembly of dust and debris

W Industry Standards

UL/cUL 50/508	File E64358 Type 1, 3, 3S, 4X, 6, 6P, 12
NEMA 250	Type 1, 3, 3S, 4X, 6, 6P, 12
CSA Std C22.2	File LR069014 Type 1, 3, 3S, 4X, 6, 6P, 12
IEC 529	IP66, IP67, IP68
Temperature Range	(-26°F to +257°F) (-32°C to +125°C)
Flammability Rating	UL94-V0
Self Extinguishing	Non-halogenated, Non-flame propagating

NOTES:

W Accessories

Back Panels

Carbon Steel	BP_CS	pg. 153
---------------------	-------	---------

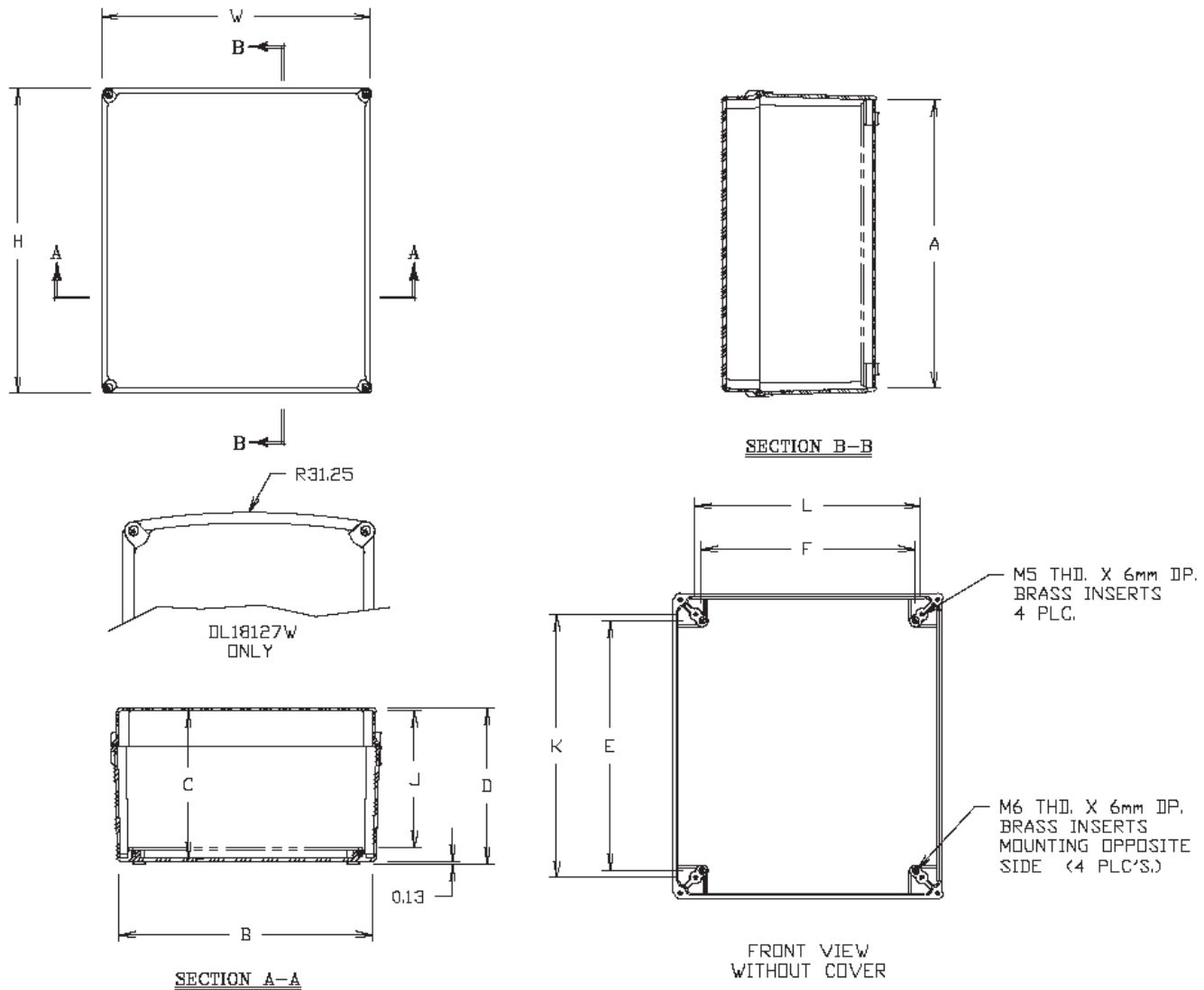
Accessories

Drain & Breather Vents	pg. 144, 146
Hole Plugs	pg. 145
Assorted Hubs and Cord Grips	pg. 145, 148
All Other Accessories	pg. 144 - 159

W Modifications

Custom Colors	pg. 12 - 13
Silk Screening	pg. 12 - 13
EMI/RFI Shielding	pg. 12 - 13
Custom Window	pg. 12 - 13
Custom Cutouts/Holes	pg. 12 - 13

DL Series "W" Configuration Technical Drawings



DuraBoxx® DL Series Enclosures								
SIZE ID NUMBER	OVERALL H X W X D	INSIDE A X B X C	MOUNTING E X F	J	K	L	SHIPPING WEIGHT	PANEL NO.
DL18127W	16.54 x 10.63 x 7.22 (420 x 270 x 183)	15.02 x 9.12 x 6.85 (382 x 232 x 174)	12.68 x 7.17 (322 x 182)	6.26 (159)	13.46 (342)	7.95 (202)	5.5 LBS	DL18127BP*
DL18168W	16.54 x 14.57 x 8.44 (420 x 370 x 214)	15.56 x 13.59 x 7.99 (395 x 345 x 207)	13.54 x 11.57 (344 x 294)	7.44 (189)	14.25 (362)	12.24 (311)	9.9 LBS	DL18168BP*
DL24168W	23.63 x 16.54 x 8.44 (600 x 420 x 214)	22.67 x 15.55 x 7.99 (576 x 395 x 207)	20.63 x 13.54 (524 x 344)	7.44 (189)	21.34 (542)	14.21 (361)	15.4 LBS	DL24168BP*

Caution: Metric units are for reference; do not convert
 * Panel ordered separately