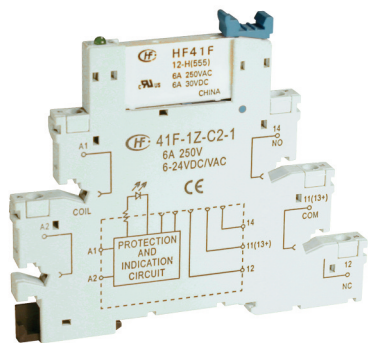
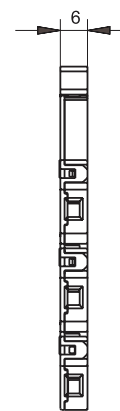
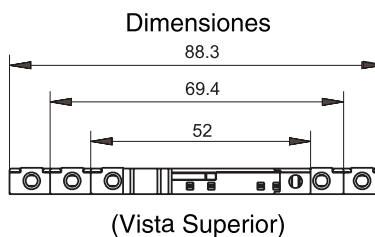
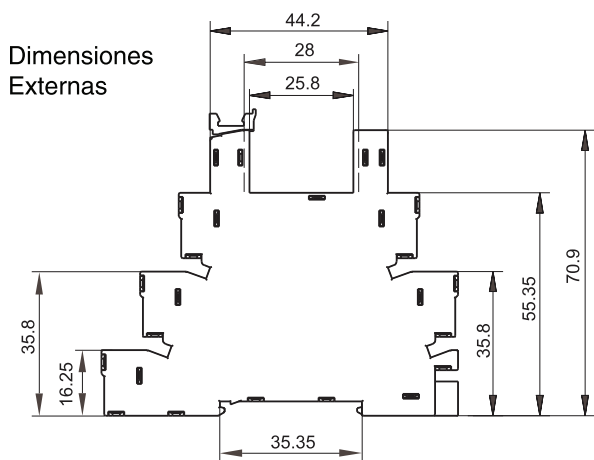


### Clema Relevador con LED Serie RS



Montaje en Riel DIN.

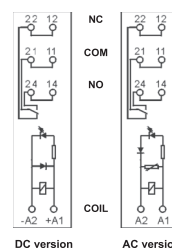
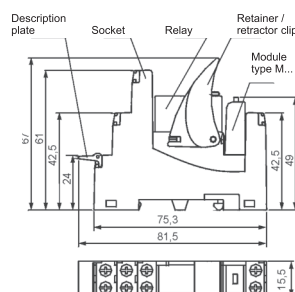
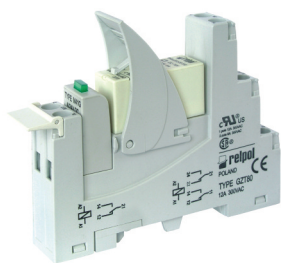


| Código   | Voltaje    | Amperaje | Tipo de Contacto   | Código para "solid state" |
|----------|------------|----------|--------------------|---------------------------|
| RSM-12CU | 12V CA/CD  | 6A       | Un polo, dos tiros | RSM-12TO ***              |
| RSM-24CU | 24V CA/CD  | 6A       | Un polo, dos tiros | RSM-24TO ***              |
| RSM-110U | 110V CA/CD | 6A       | Un polo, dos tiros | RSM-110TO ***             |
| RSM-220U | 220V CA/CD | 6A       | Un polo, dos tiros | RSM-220TO ***             |

\*\*\* Estos se emplean para controlar un SSR externo, el relevador maneja como salida a 48VDC y 100mA

### Relevadores Modulares para Riel DIN

Dimensiones Externas



| Código    | Voltaje | Amperaje        | Tipo de Contacto     |
|-----------|---------|-----------------|----------------------|
| RM-24     | 24VDC   | 8A/250VAC/24VDC | Dos polos, dos tiros |
| RM-110    | 110VDC  | 8A/250VAC/24VDC | Dos polos, dos tiros |
| RM-110-AC | 110VAC  | 8A/250VAC/24VDC | Dos polos, dos tiros |
| RM-230-AC | 230VAC  | 8A/250VAC/24VDC | Dos polos, dos tiros |