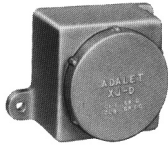


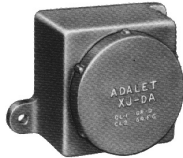
SCREW COVER

Screw Cover Explosionproof Meter Housings

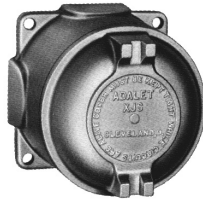
- Drilled and tapped to specification, attach layout sheet.
- Dimensions are nominal internal.



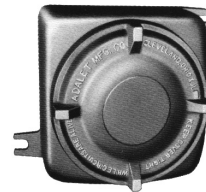
XJDH N4
4 1/8" x 4 1/8" x 3"
Cover Opening 3 3/4"



XJDAH N4
5 3/4" x 5 3/4" x 4 7/8"
Cover Opening 4 3/16"



XJSH N4
(Tapped on side pads only)
4" I.D. x 2 22/32" depth
Cover Opening 4"



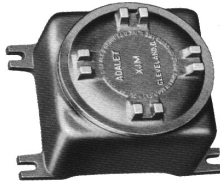
XJLH N4
6" x 6" x 3 5/16"
Cover Opening 5 3/8"



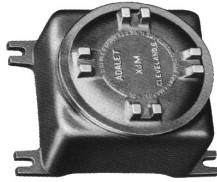
XJTH N4
5 13/16" x 6 9/16" x 4"
Cover Opening 5 3/8"



XJXH N4
4 7/8" x 4 7/8" x 3 1/16"
Cover Opening 4 3/4"



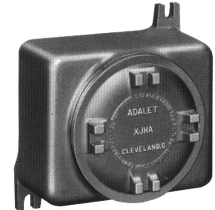
XJMH N4
6 3/4" x 6 3/4" x 8"
Cover Opening 7"



XJMAH N4
6 3/4" x 6 3/4" x 5"
Cover Opening 7"



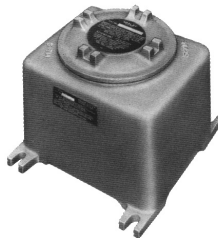
XJMCH N4
6 3/4" x 6 3/4" x 3"
Cover Opening 7"



XJHAH N4
7 3/16" x 9 3/16" x 4"
Cover Opening 7"



XJHBH N4
7 1/4" x 9 1/8" x 6"
Cover Opening 7"



XJHCH N4
7 3/4" x 10 3/16" x 5"
Cover Opening 7"



XJKH N4
9 1/2" x 11 1/2" x 6 1/8"
Cover Opening 9"



XJKAH N4
9 1/2" x 11 1/2" x 8 1/8"
Cover Opening 9"

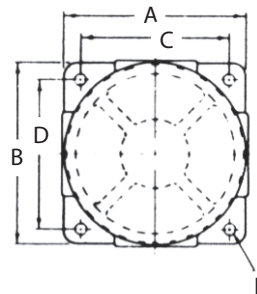


XJNH 6 & 12 N4
11 1/2" x 12 3/4" x 6(12)"
Cover Opening 10 3/4"

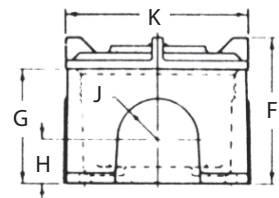
CERTIFICATIONS

Class I, Div. 1, Groups B, C, D
Class II, Groups E, F, G
NEMA Type 4

UL 1203
CSA C22.2 No. 25 & 30
UL 50



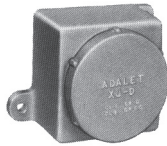
XJWHH N4
6 7/8" I.D. x 4 7/8" D
Cover Opening 6 7/8"



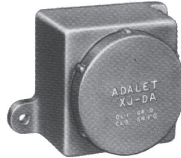
XJWTH N4
5 3/8" I.D. x 3 3/4" D
Cover Opening 5 3/8"

Screw Cover Explosionproof / Flameproof Meter Housings

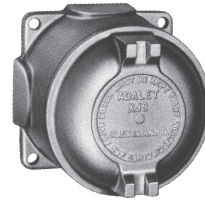
- Drilled and tapped to specification, attach layout sheet.
- Dimensions are internal.



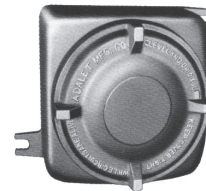
XJDHX N4
4 1/8" x 4 1/8" x 3"
Cover Opening 3 3/4"



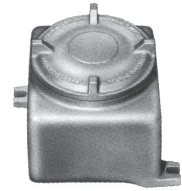
XJDAHX N4
5 3/4" x 5 3/4" x 4 7/8"
Cover Opening 4 3/16"



XJSHX N4
(Tapped on side pads only)
4" I.D. x 2 23/32" depth
Cover Opening 4"



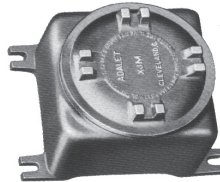
XJLHX N4
6" x 6" x 3 1/16"
Cover Opening 5 3/8"



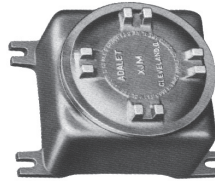
XJTHX N4
5 13/16" x 6 3/16" x 4"
Cover Opening 5 3/8"



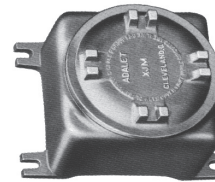
XJHXX N4
4 7/8" x 4 7/8" x 3 1/16"
Cover Opening 4 3/4"



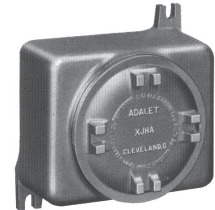
XJMHX N4
6 3/4" x 6 3/4" x 8"
Cover Opening 7"



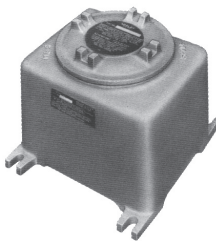
XJMAHX N4
6 3/4" x 6 3/4" x 5"
Cover Opening 7"



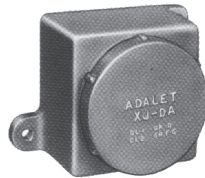
XJMCHX N4
6 3/4" x 6 3/4" x 3"
Cover Opening 7"



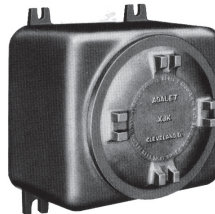
XJHAHX N4
7 3/16" x 9 3/16" x 4"
Cover Opening 7"



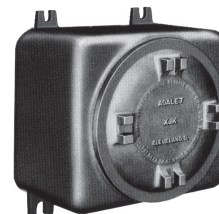
XJHBHX N4
7 1/4" x 9 1/8" x 6"
Cover Opening 7"



XJCHX N4
7 3/4" x 10 3/16" x 5"
Cover Opening 7"



XJKHX N4
9 1/2" x 11 1/2" x 6 1/8"
Cover Opening 9"



XJKAHX N4
9 1/2" x 11 1/2" x 8 1/8"
Cover Opening 9"



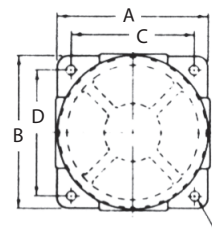
XJNHX 6 & 12 N4
11 1/2" x 12 3/4" x 6(12)"
Cover Opening 10 3/4"

CERTIFICATIONS

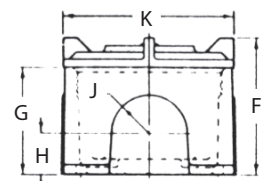
Class I, Div. 1, Groups B, C, D
Class II, Groups E, F, G
Class III
Class I, Zone 1, AEx d IIB+H2
Ex d IIB+H2
0539 Ⓢ II 2GD (Optional)*
EEx d IIB+H2 (Optional)*
IP 66
NEMA Type 4

UL 1203
CSA C22.2 No. 25 & 30
UL 60079-0/UL 60079-1
CSA 60079-0/CSA 60079-1
ATEX Directive 94/9/EC
EN 50014, EN50018
IEC 60529
UL 50

*specify ATEX if required



XJWHHX N4
6 7/8" I.D. x 4 7/8" D
Cover Opening 6 7/8"



XJWTHX N4
5 3/8" I.D. x 3 3/4" D
Cover Opening 5 3/8"

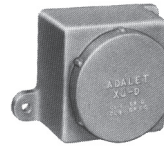
EXPLOSIONPROOF
METER HOUSINGS

SCREW COVER

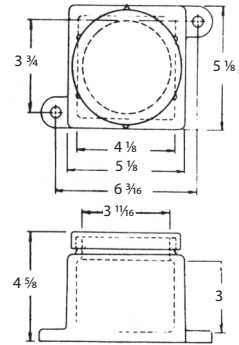
Screw Cover Explosionproof Meter Housings

STANDARD FEATURES

- The heavy wall sections of these boxes are thick enough to provide the required five threads for the maximum conduit size as indicated.
- The boxes are drilled and tapped to specification. (A layout sketch should be attached to each order.)



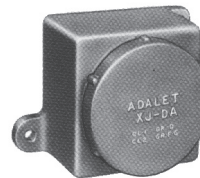
XJDH N4
XJDHX N4



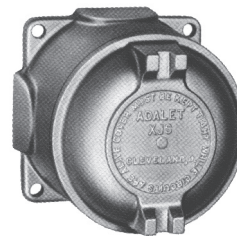
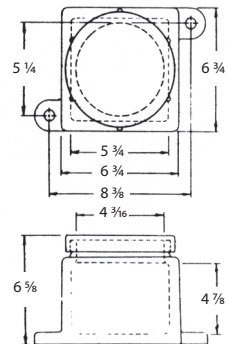
NOMINAL DIMENSIONS

CAT. NUMBER	CONDUIT SIZE	INSIDE DIM.			DIAMETER COVER OPENING	MOUNTING HOLE SIZE	WEIGHT (LBS)
		W	L	D			
XJDH N4	2	4 1/8	4 1/8	3	3 3/4	7/16	5 1/2
XJDAH N4	1	5 3/4	3 3/4	4 7/8	4 3/16	7/16	11 1/2
XJSH N4*	1	4	-	2 23/32	4	5/16	2 3/4

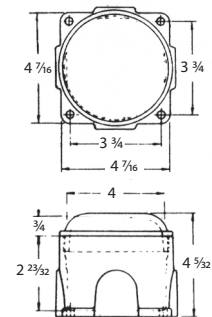
*XJS can be tapped on side pads only.



XJDAH N4
XJDAHX N4

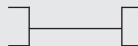


XJSH N4
XJSHX N4



CERTIFICATIONS

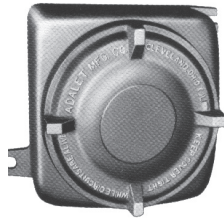
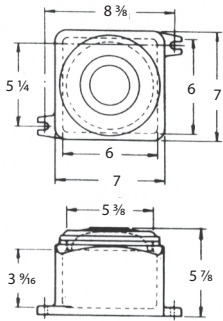
Class I, Div. 1, Groups B, C, D
Class II, Groups E, F, G
NEMA Type 4



UL 1203
CSA C22.2 No. 25 & 30
UL 50

SCREW COVER

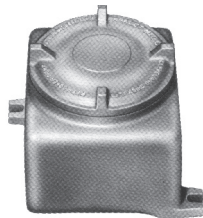
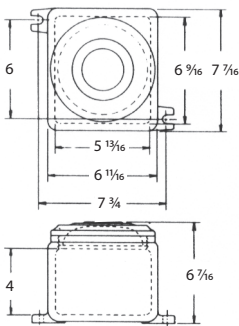
Screw Cover Explosionproof / Flameproof Meter Housings



XJLH N4
XJLHX N4

STANDARD FEATURES

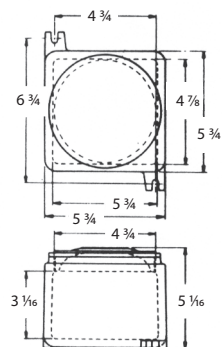
- The heavy wall sections of these boxes are thick enough to provide the required five threads for the maximum conduit size as indicated.
- The boxes are drilled and tapped to specification. (A layout sketch should be attached to each order.)



XJTH N4
XJTHX N4

NOMINAL DIMENSIONS

CAT. NUMBER	CONDUIT SIZE	INSIDE DIM.			DIAMETER COVER OPENING	MOUNTING HOLE SIZE	WEIGHT (LBS)
		W	L	D			
XJLH N4	2	6	6	3 9/16	5 3/8	7/16	9 1/2
XJTH N4	2	5 13/16	6 9/16	4	5 3/8	1/2	11
XJXH N4	2	4 7/8	4 7/8	3 1/16	4 3/4	1 1/23	6 1/4



XJXH N4
XJXHX N4

CERTIFICATIONS

Class I, Div. 1, Groups B, C, D
Class II, Groups E, F, G
NEMA Type 4



UL 1203
CSA C22.2 No. 25 & 30
UL 50



EXPLOSIONPROOF
METER HOUSINGS

SCREW COVER

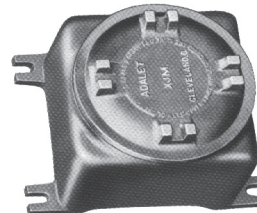
Screw Cover Explosionproof Meter Housings

STANDARD FEATURES

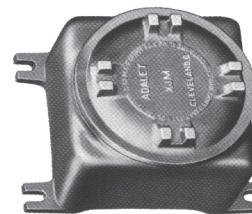
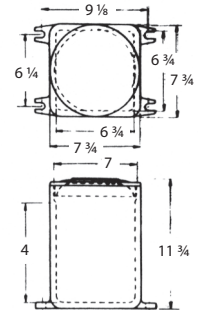
- The heavy wall sections of these boxes are thick enough to provide the required five threads for the maximum conduit size as indicated.
- The boxes are drilled and tapped to specification. (A layout sketch should be attached to each order.)

NOMINAL DIMENSIONS

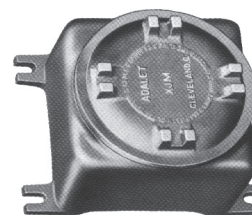
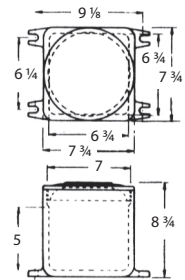
CAT. NUMBER	CONDUIT SIZE	INSIDE DIM.			DIAMETER COVER OPENING	MOUNTING HOLE SIZE	WEIGHT (LBS)
		W	L	D			
XJMH N4	2	6 3/4	6 3/4	8	7	7/16	21 1/2
XJMAH N4	2	6 3/4	6 3/4	5	7	7/16	16 1/2
XJMCH N4*	2	6 3/4	6 3/4	3	7	5/16	14 1/2



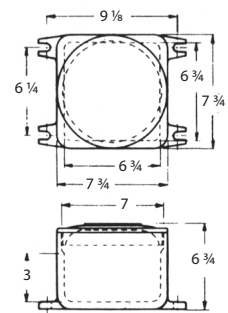
XJMH N4
XJMHX N4



XJMAH N4
XJMAHX N4

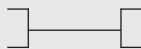


XJMCH N4
XJMCHX N4



CERTIFICATIONS

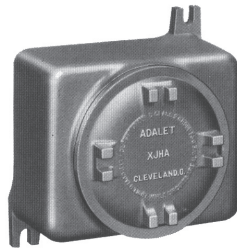
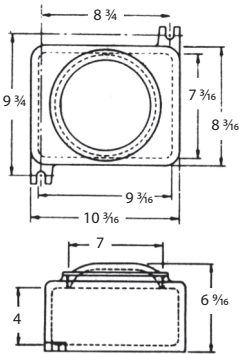
Class I, Div. 1, Groups B, C, D
Class II, Groups E, F, G
NEMA Type 4



UL 1203
CSA C22.2 No. 25 & 30
UL 50



Screw Cover Explosionproof / Flameproof Meter Housings



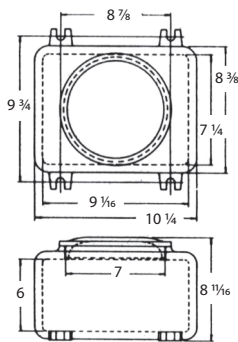
**XJHAH N4
XJHAHX**

STANDARD FEATURES

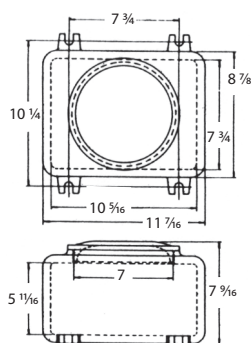
- The heavy wall sections of these boxes are thick enough to provide the required five threads for the maximum conduit size as indicated.
- The boxes are drilled and tapped to specification. (A layout sketch should be attached to each order.)

NOMINAL DIMENSIONS

CAT. NUMBER	CONDUIT SIZE	INSIDE DIM.			DIAMETER COVER OPENING	MOUNTING HOLE SIZE	WEIGHT (LBS)
		W	L	D			
XJHAH N4	2	7 3/16"	9 3/16"	4"	7"	9/16"	16 1/2
XJHBH N4	2	7 1/4"	9 1/8"	6"	7"	9/16"	22
XJHCH N4	2	7 3/4"	10 1/16"	5"	7"	9/16"	18



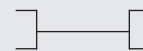
**XJHBH N4
XJHBHX N4**



**XJHCH N4
XJHCHX N4**

CERTIFICATIONS

Class I, Div. 1, Groups B, C, D
Class II, Groups E, F, G
NEMA Type 4



UL 1203
CSA C22.2 No. 25 & 30
UL 50



EXPLOSIONPROOF
METER HOUSINGS

SCREW COVER

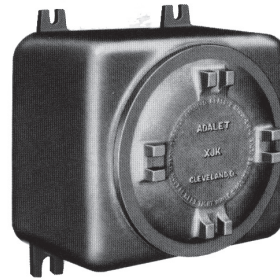
Screw Cover Explosionproof Meter Housings

STANDARD FEATURES

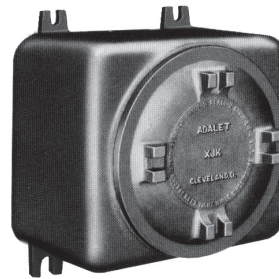
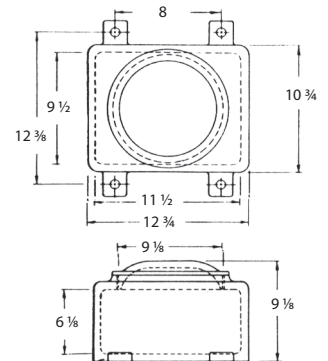
- The heavy wall sections of these boxes are thick enough to provide the required five threads for the maximum conduit size as indicated.
- The boxes are drilled and tapped to specification. (A layout sketch should be attached to each order.)

NOMINAL DIMENSIONS

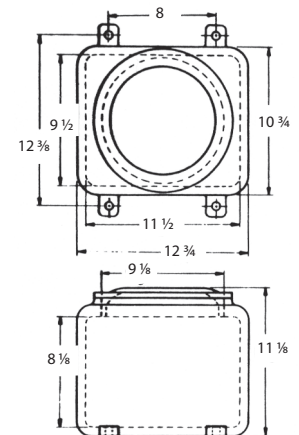
CAT. NUMBER	CONDUIT SIZE	INSIDE DIM.			DIAMETER COVER OPENING	MOUNTING HOLE SIZE	WEIGHT (LBS)
		W	L	D			
XJKH N4	3	9 ½	11 ½	6 ⅞	9	⅝	40
XJKAH N4	3	9 ½	11 ½	8 ⅞	9	⅝	44



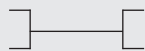
XJKH N4
XJKHX N4



XJKAH N4
XJKAHX N4

**CERTIFICATIONS**

Class I, Div. 1, Groups B, C, D
Class II, Groups E, F, G
NEMA Type 4



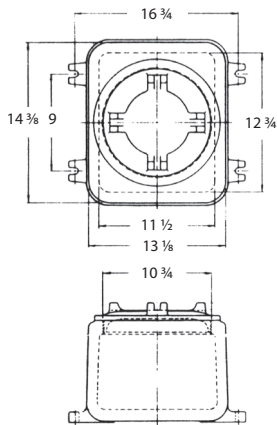
UL 1203
CSA C22.2 No. 25 & 30
UL 50



SCREW COVER

Screw Cover

Explosionproof Meter Housings



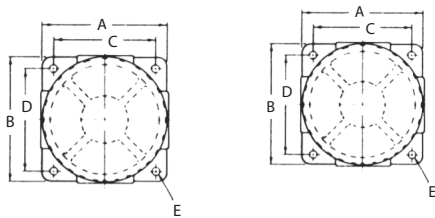
XJNH N4
XJNHX N4

STANDARD FEATURES

- The heavy wall sections of these boxes are thick enough to provide the required five threads for the maximum conduit size as indicated.
- A large cover opening enhances mounting pan installation.
- Two depths available for a wider selection of efficient component packaging
- The boxes are drilled and tapped to specification. (A layout sketch should be attached to each order.)

NOMINAL DIMENSIONS

CAT. NUMBER	CONDUIT SIZE	INSIDE DIM.			DIAMETER COVER OPENING	MOUNTING HOLE SIZE	WEIGHT (LBS)	OVERALL HEIGHT
		W	L	D				
XJNH 6	4	11 1/2	12 3/4	6	10 3/4	5/8	61	9 13/16
XJNH 12	4	11 1/2	12 3/4	12	10 3/4	5/8	85	13 5/16



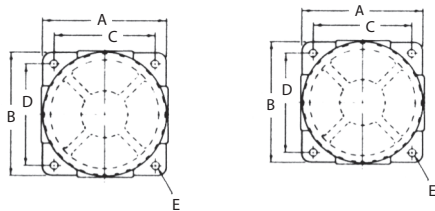
XJWHH N4
XJWHHX N4

STANDARD FEATURES

- The heavy wall sections of these boxes are thick enough to provide the required five threads for the maximum size as indicated.
- The boxes are drilled and tapped to specification. (A layout sketch should be attached to each order.)

NOMINAL DIMENSIONS

CAT. NUMBER	CONDUIT SIZE	INSIDE DIM.		DIAMETER COVER OPENING	MOUNTING HOLE SIZE	WEIGHT (LBS)
		Dia.	D			
XJWHH N4	2 1/2	6 7/8	4 7/8	6 7/8	7/16	8 1/2
XJWTH N4	2	5 3/8	3 3/4	5 3/8	3/8	7 1/2



XJWTH N4
XJWTHX N4

NOMINAL DIMENSIONS (Inches)

CAT. NUMBER	A	B	C	D	E	F	G	H	J	K
XJWHH N4	7-3/4	7 3/4	6 3/8	6 3/8	7/16	5 5/8	4 9/16	1 13/16	1 3/4	7 7/8
XJWTH N4	6 1/4	6 1/4	5 1/8	5 1/8	3/8	5 1/8	4	1 1/2	1 7/16	6 3/8

CERTIFICATIONS

Class I, Div. 1, Groups B, C, D
Class II, Groups E, F, G
NEMA Type 4

UL 1203
CSA C22.2 No. 25 & 30
UL 50



EXPLOSIONPROOF
METER HOUSINGS